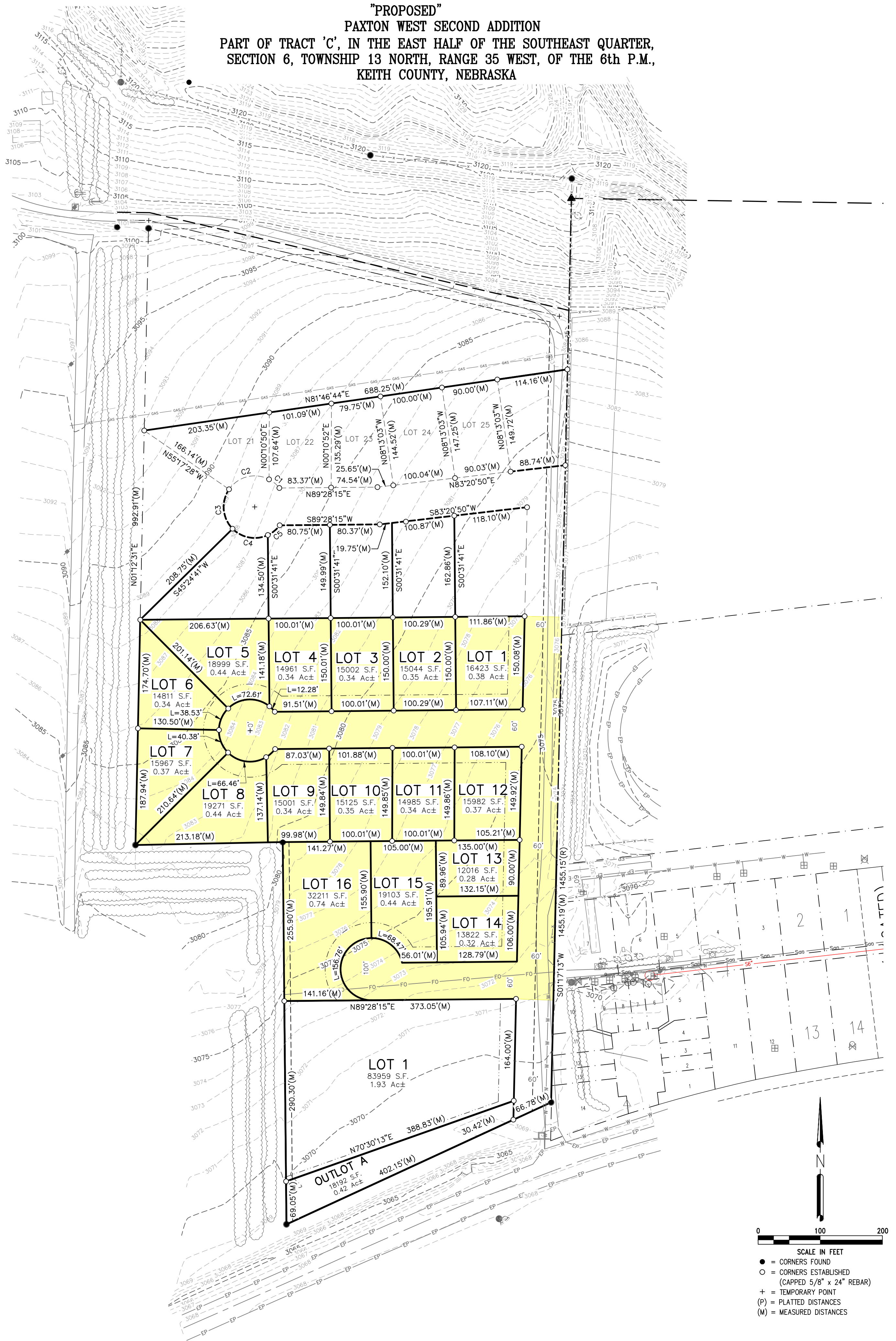


"PROPOSED"
PAXTON WEST SECOND ADDITION
 PART OF TRACT 'C', IN THE EAST HALF OF THE SOUTHEAST QUARTER,
 SECTION 6, TOWNSHIP 13 NORTH, RANGE 35 WEST, OF THE 6th P.M.,
 KEITH COUNTY, NEBRASKA



0 100 200
 SCALE IN FEET
 ● = CORNERS FOUND
 ○ = CORNERS ESTABLISHED
 (CAPPED 5/8" x 24" REBAR)
 + = TEMPORARY POINT
 (P) = PLATTED DISTANCES
 (M) = MEASURED DISTANCES

MA
 Miller & Associates
 1111 CENTRAL AVENUE
 KEARNEY, NE 68847-6833
 Tel: 308-234-6456
 Fax: 308-234-1146

PLOTTED: 12/13/2018 5:56:42 PM 12/12/2018 3:41 PM Craig A. Bennett G:\Projects\151\151-01-007\Civil-Dwg\Design Drawings\Survey Design\West Second Sub PLAT.dwg